



EXPERTISE
EXPLORATION
EXECUTION IN MEXICO

FABLED
SILVER GOLD
CORP.

TSX-V: FCO

fabledsilvergoldcorp.com

June 2021

DISCLAIMER

This presentation may contain certain information that constitutes forward-looking statements. Forward-looking statements are frequently characterized by words such as “plan,” “project,” “intend,” “believe,” “anticipate,” and other similar words, or statements that certain events or conditions “may” or “will” occur. Forward-looking statements are made and are subject to a variety of risks and uncertainties and other factors that could cause actual events or results to differ materially from those projected in the forward-looking statements. These factors include inherent risks involved in the exploration and development of mineral properties, the uncertainties involved in interpreting drilling results and other geological data, fluctuating metal prices and other factors described above.

The Company disclaims any obligation to update or revise any forward-looking statements if circumstances or management’s estimates or opinions could be changed. The reader is cautioned not to place undue reliance on forward-looking statements. Most information with respect to resources and assays are historical in nature and the Company makes no representation as to its accuracy. The technical information contained within this presentation has been reviewed and approved by the Company’s **CEO, President and Director, Peter J. Hawley**, PGeo, a Qualified Person as defined by NI 43-101.

HIGHLIGHTS

1 WORLD CLASS LOCATION

Historic high-grade silver producing camp located in the heart of Mexico's prolific epithermal silver-gold belt.

2 STRONG FOUNDATION FOR GROWTH

Existing NI 43-101 Resource of 3.2Moz Indicated and 1.1Moz Inferred in two primary veins open along strike and depth with objective to explore and expand.

3 SIGNIFICANT EXPLORATION UPSIDE

New theory of multiple phases of mineralization with 21 underexplored veins.

4 TRACK RECORD IN MEXICO

Experienced management team with technical, country and capital markets experience.



CAPITAL STRUCTURE – JUNE 16, 2021



Symbol:	FCO:TSX.V
Share Price:	\$0.17
Market Capitalization:	\$33M
Shares Issued & Outstanding:	202,430,403
CS Warrants Outstanding:	44,181,500
Fully Diluted:	252,398,970
Stock Options Issued*:	5,787,067
<small>*187,067 at \$0.30; 600,000 at \$0.15; 600,000 at \$0.1</small>	
Cash Position:	\$4M

BOARD AND MANAGEMENT



David Smalley, BA, LLB, Chairman of the Board - David Smalley is a corporate finance and securities lawyer who has practiced for 28 years. He has been a director and officer of public companies for over 19 years. Mr. Smalley was one of the founders of Canaco Resources.



Peter Hawley, B. Eng, BSc, PGeo, CEO, President, Director — Peter Hawley, Co founder of Fabled Copper Corp, now Fabled Silver Gold Corp, founder of Scorpio Mining Corporation (renamed Americas Gold and Silver Corporation). Founder of Scorpio Gold Corp, a Nevada open pit gold producer. Co founder of Niogold Resource Corp (renamed Osisko Mining). He has over 35 years of mining industry experience that spans grassroots exploration through to development and production.



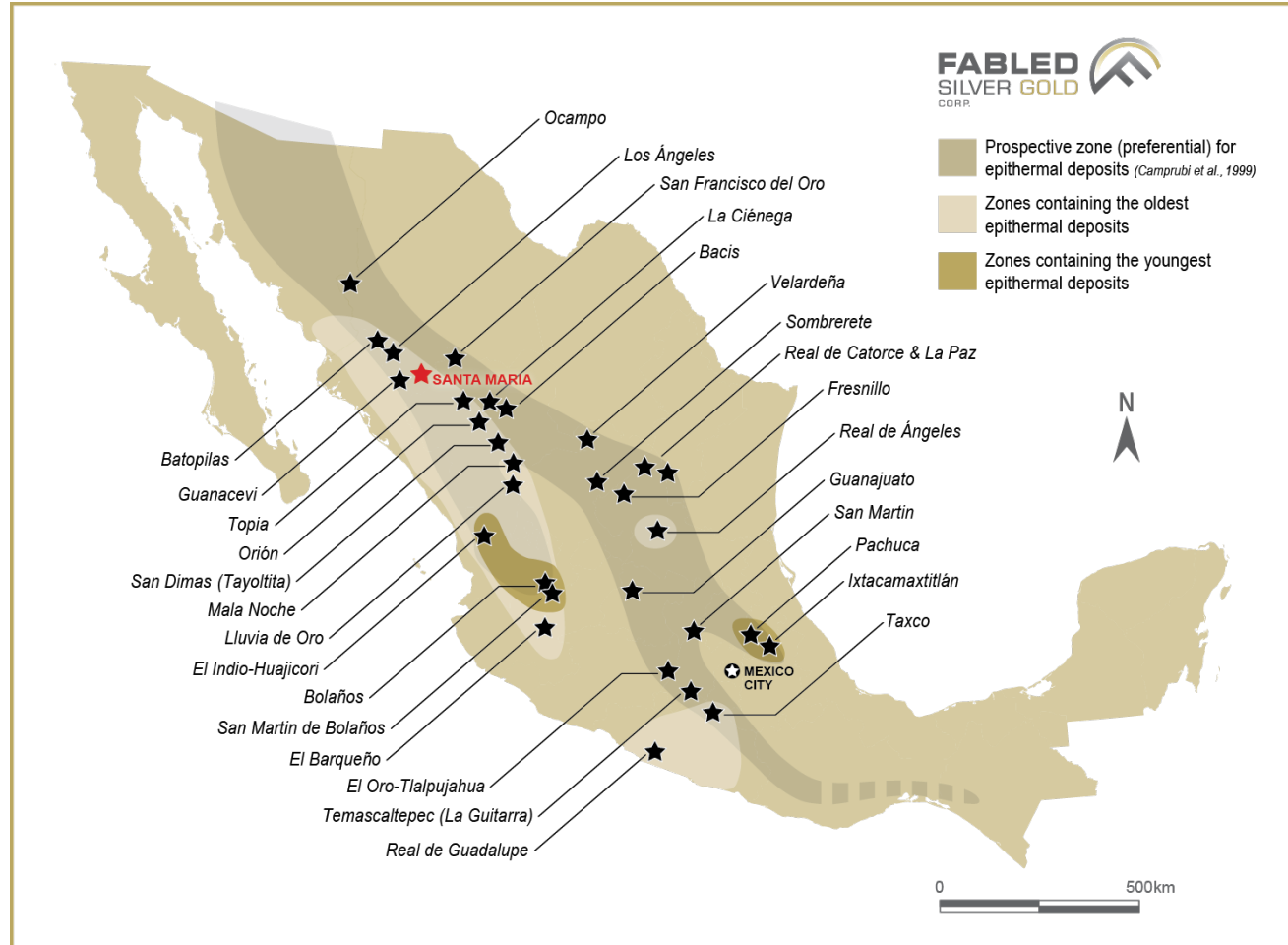
Luc Pelchat, Director - Mr. Pelchat is the founder and President of the Canadian Chamber of Commerce in North Mexico. Following 24 years with a Canadian multinational company operating in the construction industry, Mr. Pelchat formed a number of his own companies and has realized multiple projects in the construction industry in Mexico.



Michael Harrison, Director - Michael Harrison has 34 years of experience in the Investment Banking Industry. During this period he has served on the Board of Directors of numerous junior and major international publicly listed companies. Throughout most of his career he has specialized in both the Biotech and Resource/Energy Sectors and has personally been responsible for raising in excess of \$1 Billion dollars in funding.

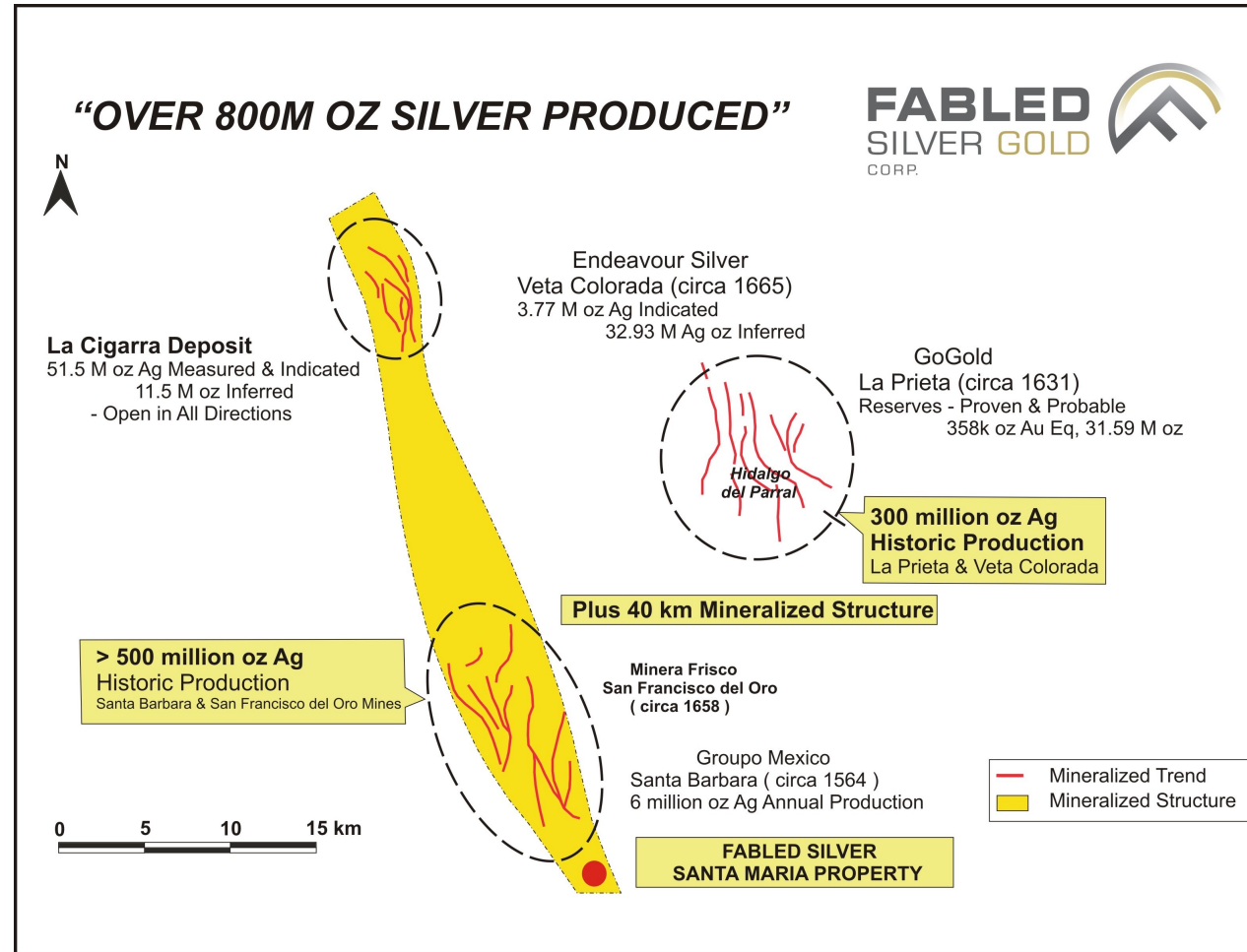
MEXICO'S EPITHERMAL SILVER-GOLD BELT

Over 5 billion ounces of silver produced

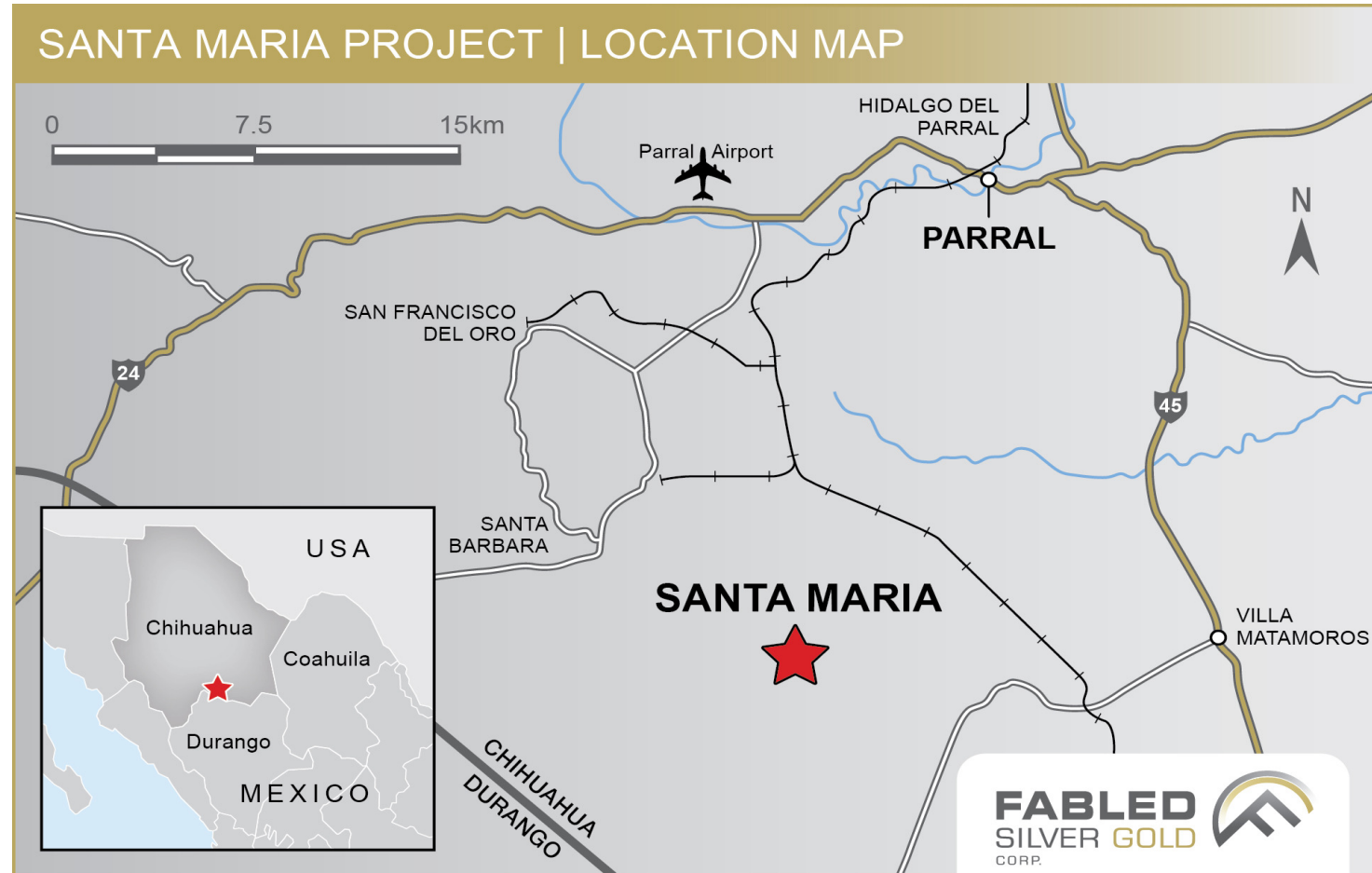


- Recognized as a significant metallogenic province, which has reportedly produced more silver than any other equivalent area in the world.
- Epithermal deposits are unique in terms of their unusually high silver grades (500 to 2,000 g/t Ag) and elevated base metals.
- Santa Maria is a high-grade silver-gold property situated in the centre of the Mexican epithermal silver-gold belt.

THE BEST PLACE TO FIND A NEW MINE IS IN THE SHADOW OF AN EXISTING MINE



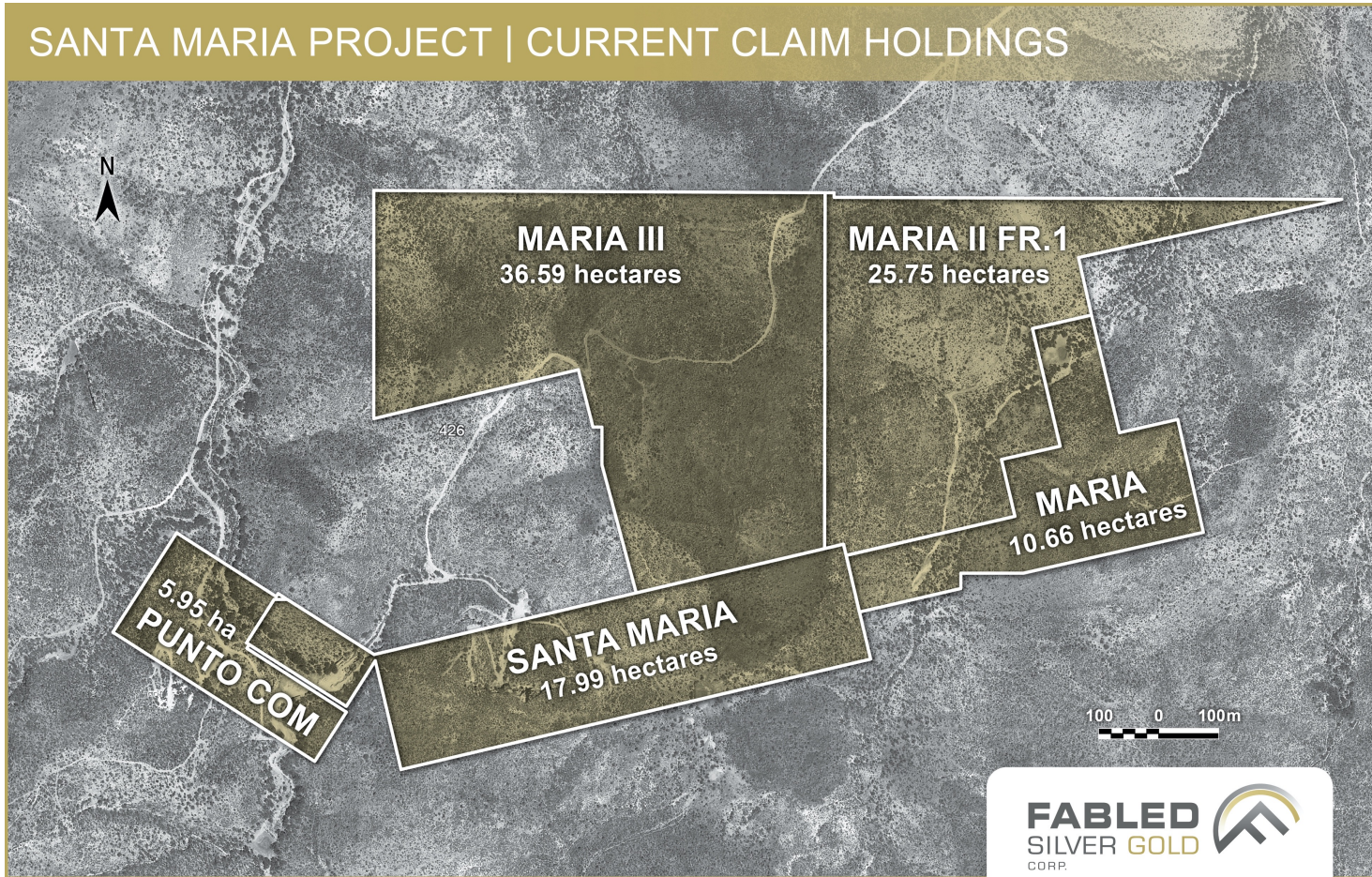
SANTA MARIA



- Located 19 km from Santa Bárbara and 39 km from Parral in State of Chihuahua, Mexico.
- Mining friendly jurisdiction of Parral has produced over 250M oz silver.
- Multiple major operators in the vicinity, including three toll mills within a 20 km distance.
- Significant infrastructure on site, including access to paved and dirt roads, grid power and labour.
- Strong community relationships in place.

HISTORY

SANTA MARIA PROJECT | CURRENT CLAIM HOLDINGS



- Historical mining area of La Union with mining dating back to the 1940's.
- Option to own 100% from Golden Minerals.
- Previous work included test mining during 2015 and 2016.
- Systematic geophysics and surface geochemistry never historically completed.

FOUNDATION FOR GROWTH



2020 43-101 Technical Report								
Indicated								
AgEq ^{1,2} Cut-Off g/t	Vein	Tonnes	Avg AgEq2 Grade g/t	AgEq ² Content oz	Avg Ag Grade g/t	Ag Content oz	Avg Au Grade g/t	Au Content oz
155.0	Main	318,813	315.6	3,235,262	271.7	2,784,945	1.11	11,378
	Dos	-	-	-	-	-	-	-
	Total	318,813	315.6	3,235,262	271.7	2,784,945	1.11	11,378
Inferred								
AgEq ^{1,2} Cut-Off g/t	Vein	Tonnes	Avg AgEq2 Grade g/t	AgEq ² Content oz	Avg Ag Grade g/t	Ag Content oz	Avg Au Grade g/t	Au Content oz
155.0	Main	124,305	239.5	957,169	209.8	838,385	0.79	3,157
	Dos		216.3	163,241	201.4	152,019	0.55	415
	Total	147,780	235.8	1,120,410	208.5	990,405	0.75	3,572

1. 43-101 Technical Report completed on December 02, 2020 by Mineral Resources Engineering.

2. AgEq cut-off grade is calculated as follows:

$$\text{AgEq cut-off} = (\$55/\text{t mining} + \$40/\text{t milling} + \$5/\text{t transport}) / (\$20 \text{ Ag/oz} \times 0.03215 \text{ oz/g}) = 155.5 \text{ g/t}$$

3.. Ag equivalent grade is calculated from \$20 Ag/oz and \$1,600 Au/oz, 90% Ag recovery and 80% Au recovery:

$$\text{AgEq} = (\text{Ag} \times 0.9) + ((\text{Au} \times 0.8) \times 80.0)$$

SIGNIFICANT PROJECT DATABASE



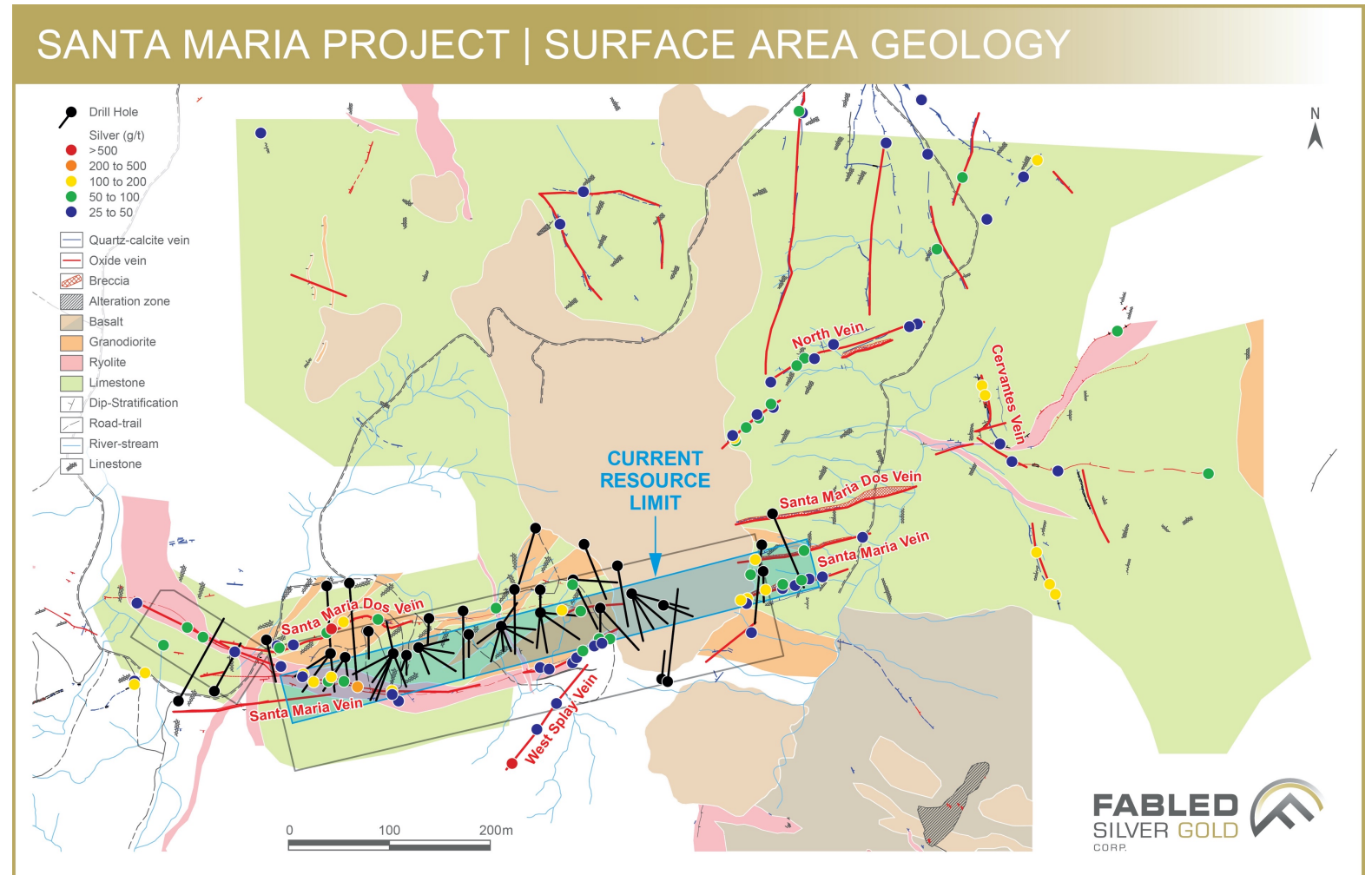
4,587 samples from surface drilling
942 from underground drilling

2,186 underground channel samples
322 surface samples

- Large database of both surface and underground samples from previous work completed.
- Typically banded epithermal textures observed in underground working and drill core.
- Presence of certain silver minerals indicate elevated level of exposure within the epithermal system.
- Past exploration planned in the context of mineralized structures, assuming the Main Vein and Dos Veins followed structural trends observed on surface and throughout underground workings.
- Successful exploration drilling down-dip of workings supported past assumption.

ROBUST VEIN SYSTEM

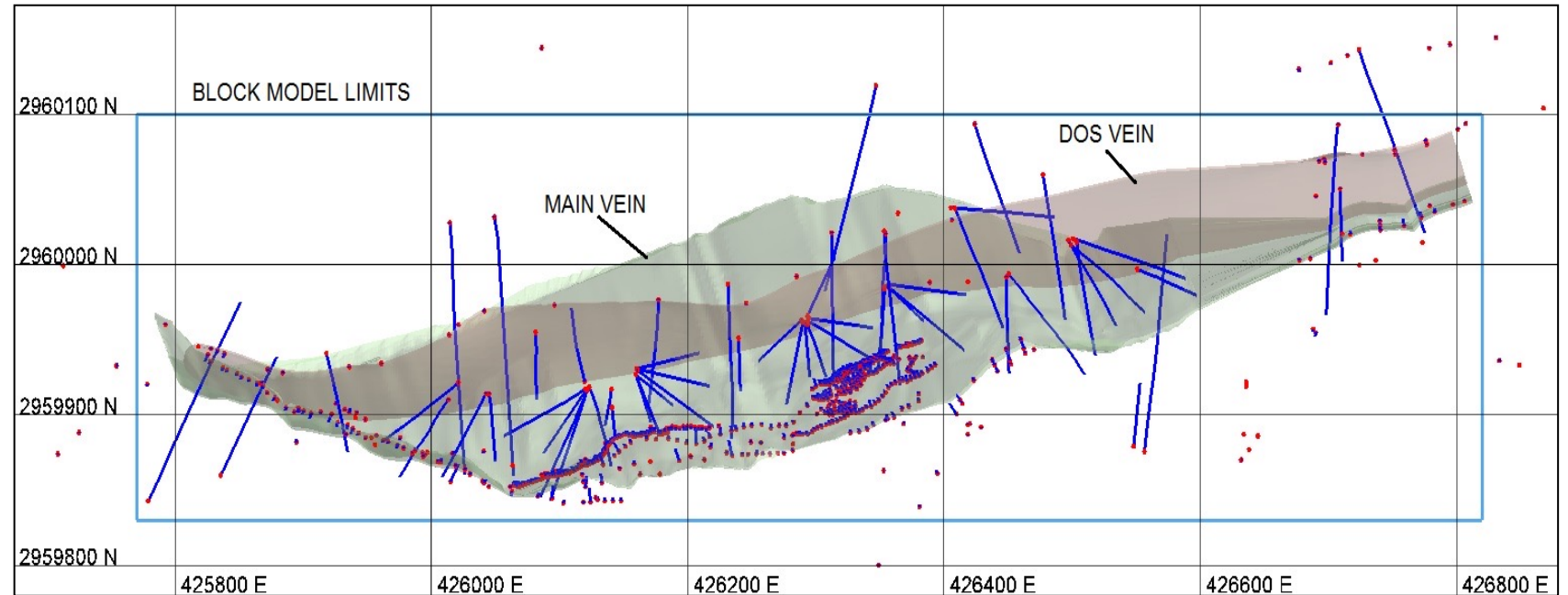
- Very high-grade elevated level of epithermal veining property wide.
- Main Deposit strikes in east-west with gold and silver and North Veins also contain base metals base metals in addition to silver gold.
- 21 veins discovered to date on surface, only 2 partly drilled and all veins open on strike and at depth.
- Surface samples from 14 veins show elevated gold / silver values with remaining veins never sampled.



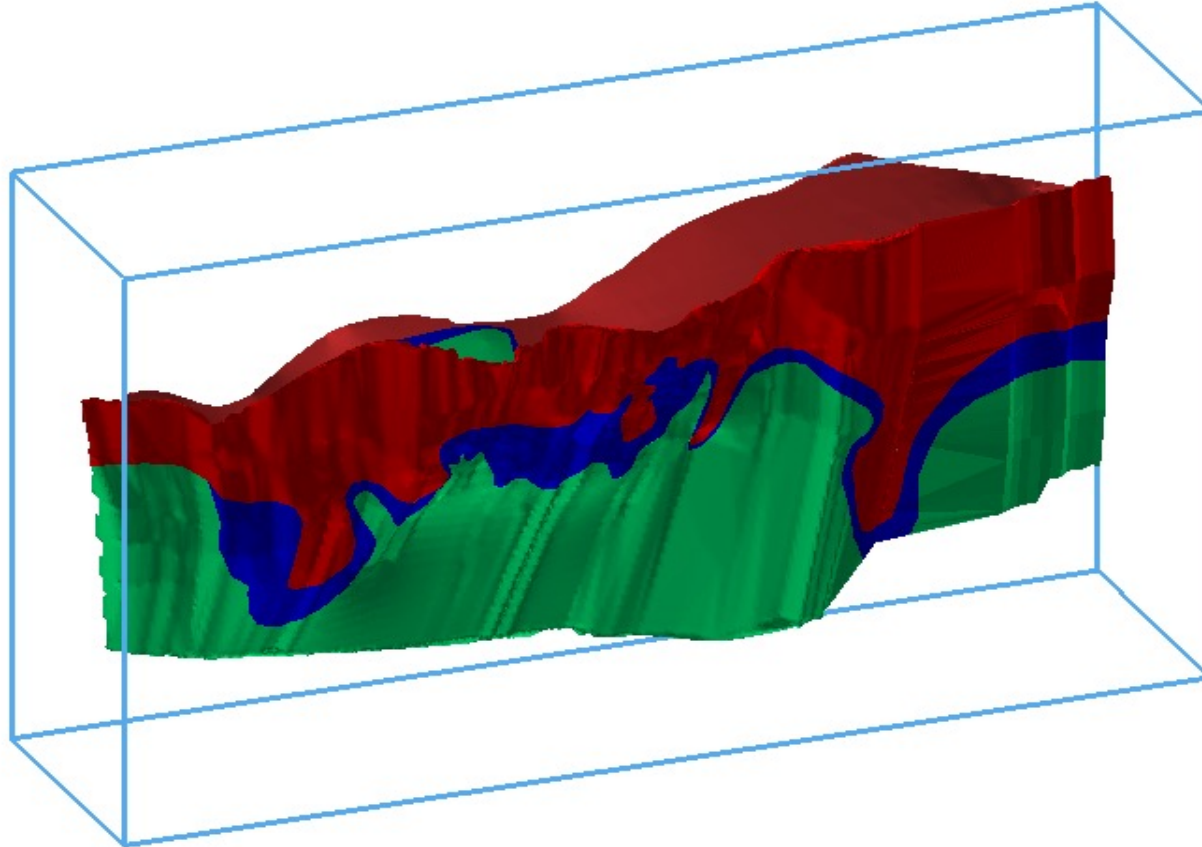
TWO DISTINCT VEINS

PLAN VIEW – SANTA MARIA DEPOSIT

- 9,900 metres of drilling completed over 4 years.
- Main vein and Dos vein partially explored but open on strike and at depth and modelled to date.



MULTIPLE PHASES OF MINERALIZATION



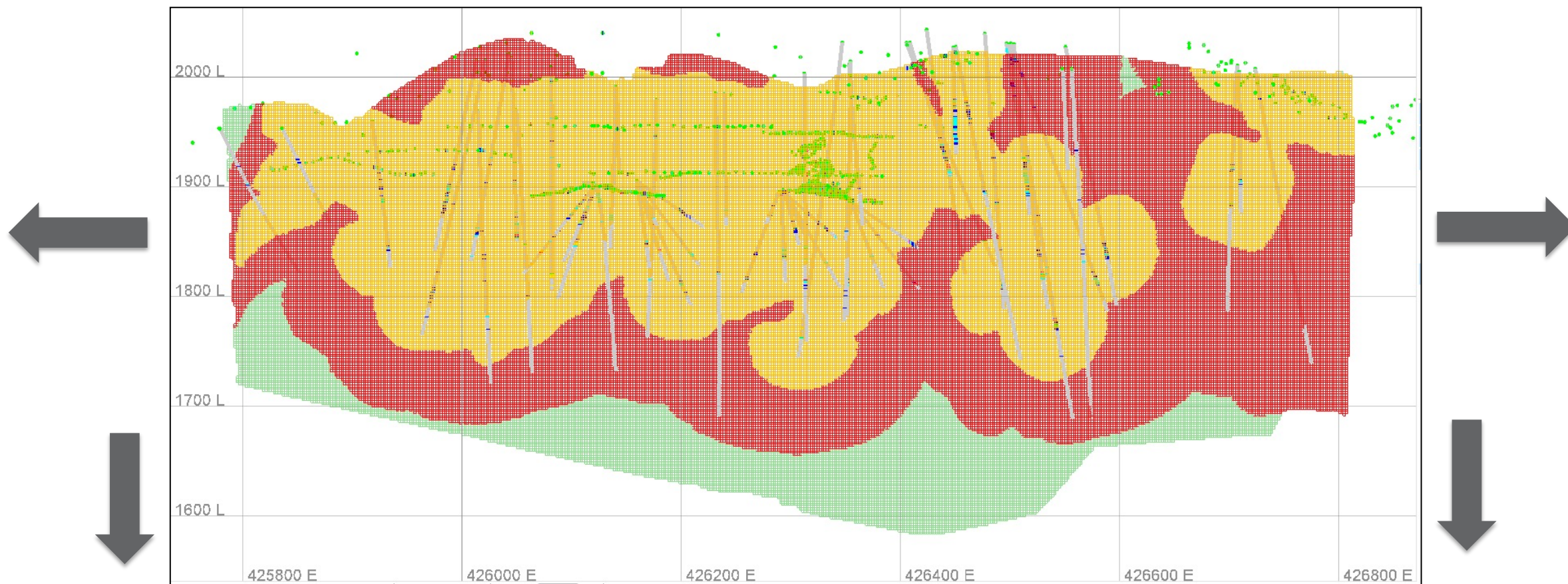
LOOKING NORTH

REDOX: OXIDE (RED), MIXED (BLUE), SULPHIDE (GREEN)

- Deposit includes oxide and sulphide zones.
- Blended zone in the middle includes the richest mineralization.
- Geological modeling to date has defined two shoots as defined the feeder type profile.

MAIN VEIN MINERAL RESOURCES

OPEN ALONG STRIKE AND AT DEPTH

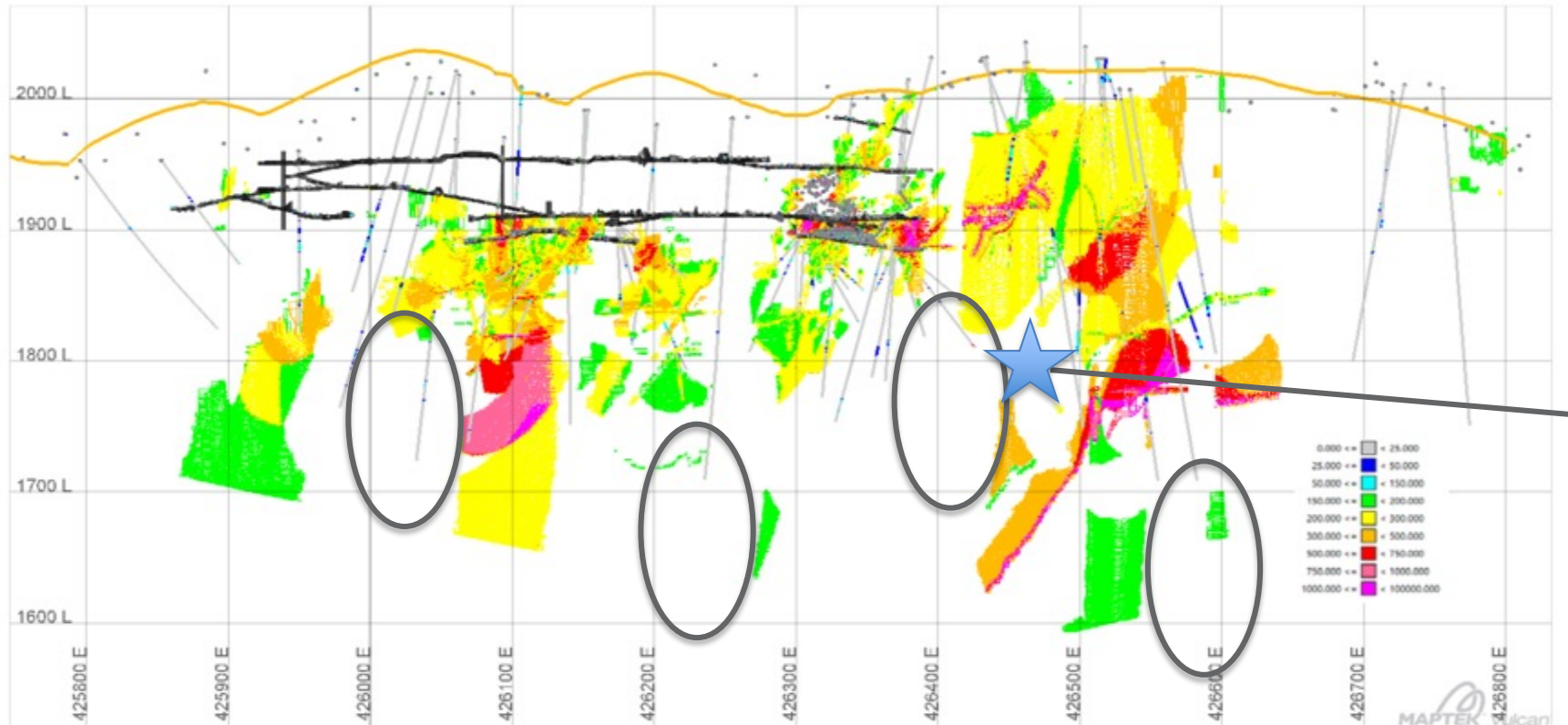


LONG SECTION

Indicated (orange), Inferred (red), Not Classified (green)

POTENTIAL TO EXPAND ORE BODY

OPEN ALONG STRIKE AND AT DEPTH PLUS INFILL OF HIGH-GRADE ORE SHOOTS



- Multiple targets defined underground to expand ore body
- First drilling to follow up on hole SM18-03 - 43.35 m @ 0.78 g/t Au and 232.89 g/t Ag

Figure 14-22: Long Section of Estimated Grades for the Santa Maria Vein showing AgEq values above the 180 g/t AgEq cutoff.

DEPOSIT TEXTURES IN DRILL CORE



*Sulphide mineralization from SM14-09,
grading 1,270 g/t*



*Oxidized Mineralization Near Surface from
SM14-09, grading 517 g/t*



*Similar texture of sulphide
mineralization observed underground*



HISTORICAL SURFACE DRILL HOLE INTERCEPTS



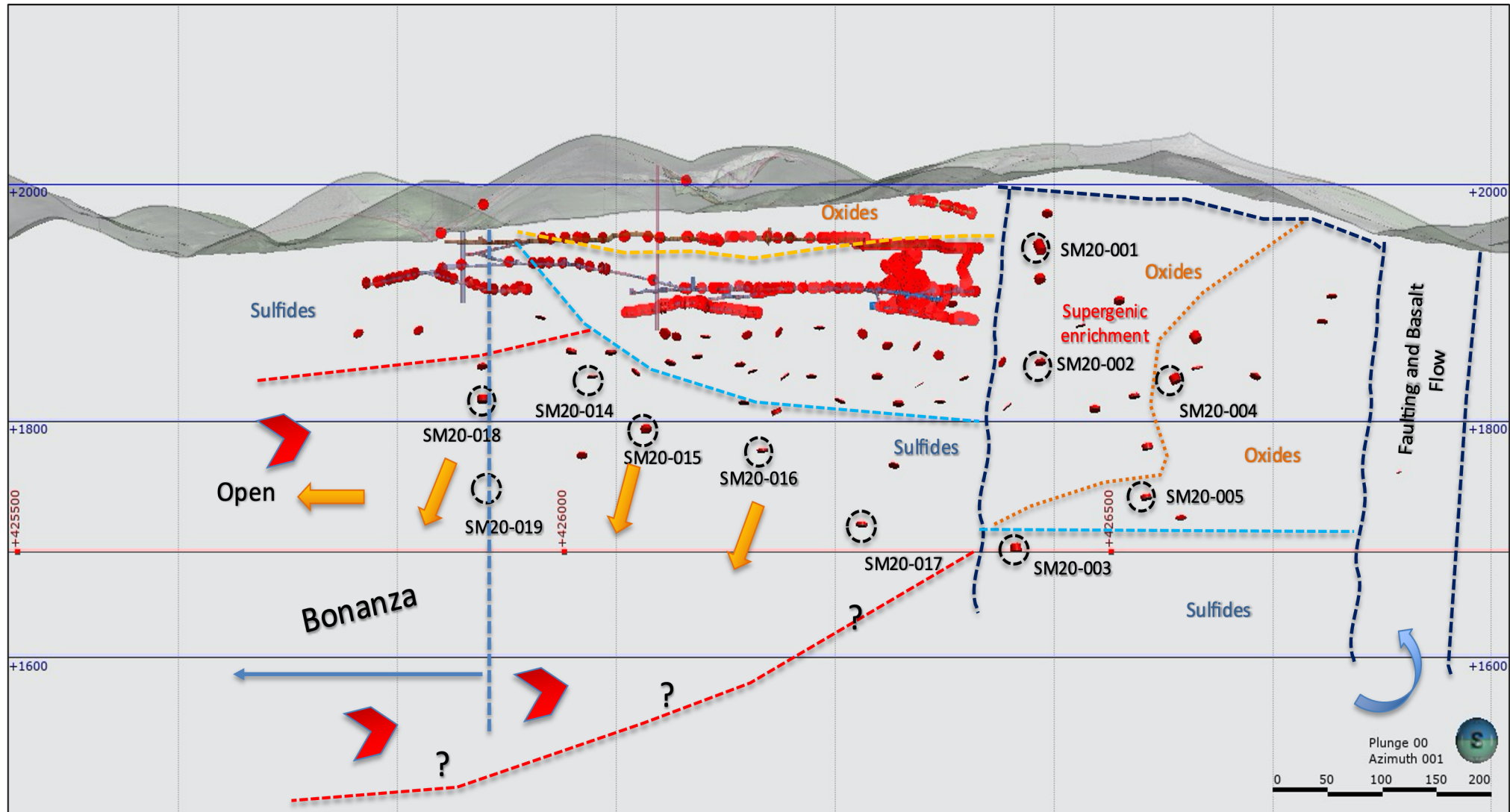
Drill Hole	Width Meters	Au g/t	Ag g/t	Pb %	Zn %	Cu %
SM14-01	0.45	1.90	1,343.89	3.28	4.39	0.24
SM14-04	0.80	0.70	780	0.92	2.98	-
	4.41	2.76	246.32	2.30	3.71	-
SM14-05	1.65	0.50	282.16	0.20	0.38	-
SM14-06	4.10	0.23	345.02	0.45	0.13	-
	4.24	1.81	332.26	0.07	0.03	-
SM14-08	4.88	2.51	522.84	1.75	2.38	-
SM14-12	0.95	0.52	1,060.37	0.59	-	-
SM16-02	2.64	0.26	282.77	-	-	-
	5.76	0.92	321.86	-	-	-
SM16-03	4.21	0.79	444.14	-	-	-

MULTIPLE NEW ANOMALIES IDENTIFIED

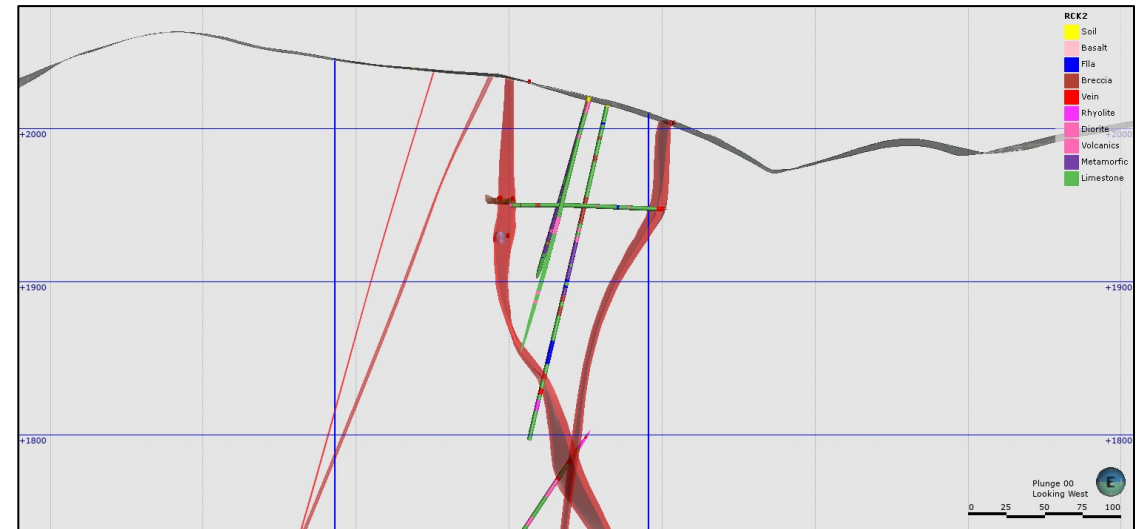
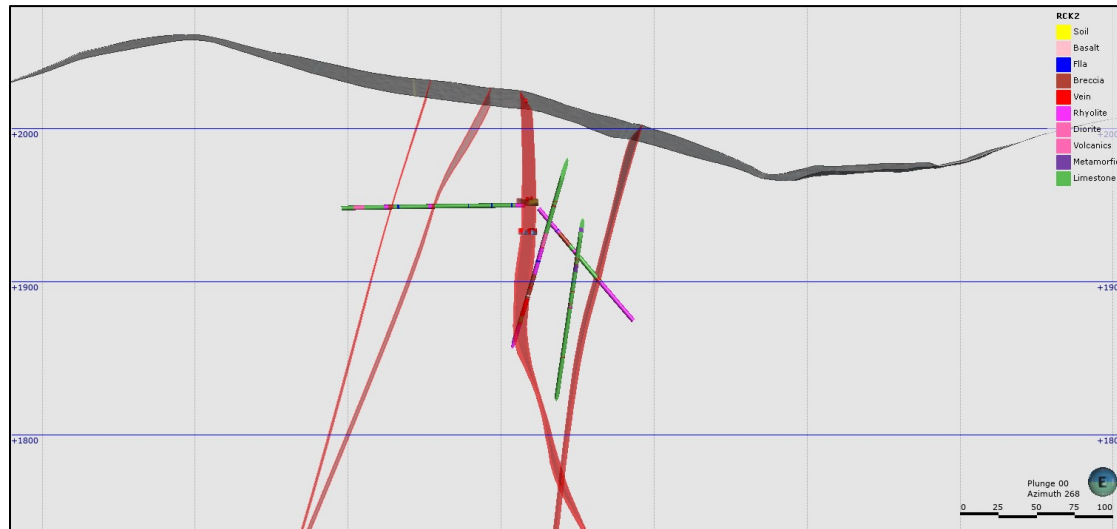


- First ever 3D IP survey with 50 m line spacing penetrated to 500 m minimum completed.
- 11 new priority targets outlined:
 - Generally E-W trending
 - IPSM-1 400 m to east of the last surface expression is sub-cropping and an extension of Santa Maria vein.
 - All other anomalies define new trends in north and range from shallow to deep seated.
 - 26 surface samples collected with results pending.
- Survey results support new theory of mineralizing events and structural controls which should enhance exploration success.
- 8,000 m drilling program extended to 9 200m.

DRILL HOLE LOCATIONS



UG DRILL HOLE LOCATIONS



SYSTEMATICALLY MOVING FORWARD

- First ever geophysics program completed.
- Additional surface sampling and mapping over property (IP anomalies).
- Extension of the 8 000m drill program to 9 200m:
 - Phase 1 - Infill and expansion drilling
 - Phase 2 - New target generation property wide
- Continue to identify opportunities for growth.



INVESTMENT SUMMARY

EXPERTISE, EXPLORATION, EXECUTION



- 1 Immediate resource growth at Santa Maria.
- 2 Strong discovery potential property wide.
- 3 Experienced management team with years of involvement in mining and exploration in Mexico.
- 4 Significant discount to peers with rerating opportunity through exploration and discovery.



APPENDIX



2020-2021 DRILL PROGRAM - SURFACE DRILL HOLE INTERCEPTS



Drill Hole	From (Meters)	To (Meters)	Width Meters	Au g/t	Ag g/t	Ag Eq g/t	Pb	Zn	Cu
SM20-001	78.40	147.00	68.60	0.18	43.98	-	-	-	-
Including	112.00	132.00	20.00	0.35	106.29	-	-	-	-
Including	115.00	117.00	2.00	0.27	146.00	-	-	-	-
Including	123.00	124.60	1.60	1.09	238.00	-	-	-	-
Including	124.60	126.50	1.90	0.34	151.00	-	-	-	-
SM20-002	150.40	156.40	6.00	0.54	323.88	-	-	-	-
Including	151.00	154.30	3.30	0.90	561.20	-	-	-	-
Including	151.00	151.90	0.90	0.84	156.00	-	-	-	-
Including	151.90	153.00	1.10	0.74	822.00	-	-	-	-
Including	153.00	154.30	1.10	1.06	621.00	-	-	-	-

2020-2021 DRILL PROGRAM - SURFACE DRILL HOLE INTERCEPTS



Drill Hole	From (Meters)	To (Meters)	Width Meters	Au g/t	Ag g/t	Ag Eq g/t	Pb	Zn	Cu
SM20-003	349.50	362.00	12.50	0.49	85.30	-	-	-	-
Including	349.50	351.80	2.30	0.20	123.10	-	-	-	-
Including	357.40	362.00	4.60	0.81	128.49	-	-	-	-
Including	357.40	359.20	1.80	1.08	214.00	-	-	-	-
Including	361.30	362.00	0.70	1.52	230.00	-	-	-	-
SM20-04	231.00	243.50	12.50	0.05	20.03	22.37	-	-	-
Including	231.00	234.00	3.00	0.06	10.90	13.93*	-	-	-
Including	234.00	236.80	2.80	0.05	20.30	22.77*	-	-	-
Including	236.80	240.00	3.20	0.04	19.30	21.25*	-	-	-
Including	240.00	243.50	3.50	0.04	28.30	30.31*	-	-	-

2020-2021 DRILL PROGRAM - SURFACE DRILL HOLE INTERCEPTS



Drill Hole	From (Meters)	To (Meters)	Width Meters	Au g/t	Ag g/t	Ag Eq g/t	Pb	Zn	Cu
SM20-05	87.00	89.20	2.20	0.57	202.73	232.08*	-	-	-
Including	87.00	88.60	1.60	0.76	245.00	284.35*	-	-	-
Including	88.60	89.20	0.60	0.05	90.00	92.67*	-	-	-
Including	219.65	220.20	0.55	0.30	147.00	162.64*	-	-	-
Including	261.90	263.50	1.60	0.22	35.30	46.62*	-	-	-
Including	314.30	321.50	7.20	0.14	46.15	53.21*	-	-	-
Including	314.30	316.30	2.00	0.15	47.80	55.36	-	-	-
Including	316.30	317.70	1.40	0.25	79.10	91.86	-	-	-
Including	317.70	319.60	1.90	0.10	32.30	37.44	-	-	-
Including	319.60	321.50	1.90	0.90	33.80	38.22	-	-	-

2020-2021 DRILL PROGRAM - SURFACE DRILL HOLE INTERCEPTS



Drill Hole	From (Meters)	To (Meters)	Width Meters	Au g/t	Ag g/t	Ag Eq g/t	Pb	Zn	Cu
SM20-06	56.05	63.45	7.40	0.09	28.04	32.44*	-	-	-
Including	64.95	66.00	1.05	0.06	38.10	41.39*	-	-	-
Including	96.30	96.70	0.40	0.06	49.40	52.59*	-	-	-
Including	105.50	110.90	5.40	0.15	44.95	52.79*	-	-	-
Including	129.00	134.30	5.30	0.10	43.23	48.38*	-	-	-
Including	216.00	230.70	14.70	0.15	37.40	44.92	-	-	-
Including	223.20	226.20	3.00	0.19	54.90	64.79	-	-	-
Including	223.20	224.10	0.90	0.20	79.00	89.19	-	-	-
SM208B	199.10	215.40	16.30	0.03	7.00	8.54	92 ppm	303 ppm	20 ppm
Including	201.00	203.10	2.10	0.05	12.00	14.57	287 ppm	331 ppm	24 ppm

2020-2021 DRILL PROGRAM - SURFACE DRILL HOLE INTERCEPTS



Drill Hole	From (Meters)	To (Meters)	Width Meters	Au g/t	Ag g/t	Ag Eq g/t	Pb	Zn	Cu
Including	210.60	215.40	4.80	0.05	13.00	15.57	86 ppm	453 ppm	32 ppm
Including	226.10	227.60	1.50	0.04	60.00	62.06	291 ppm	527 ppm	35 ppm
Including	227.60	234.00	6.40	0.02	4.00	5.03	101 ppm	253 ppm	24 ppm
Including	281.80	283.30	1.50	0.04	138.00	140.06	455 ppm	1,585 ppm	141 ppm
SM20-11	62.80	99.20	30.60	0.042	30.04	31.20	514 ppm	1,586 ppm	44 ppm
Including	80.50	95.50	15.00	0.03	64.00	65.65	776 ppm	1,968 ppm	45 ppm
Including	65.00	66.20	1.20	0.041	108.00	110.11	849 ppm	2,670 ppm	50 ppm
Including	91.10	95.50	4.40	0.062	83.50	86.69	237 ppm	458 ppm	33 ppm
Including	101.00	103.20	2.20	0.017	117.70	118.57	85 ppm	206 ppm	27 ppm
Including	121.80	125.40	3.60	0.036	40.80	42.65	44 ppm	137 ppm	29 ppm

2020-2021 DRILL PROGRAM - SURFACE DRILL HOLE INTERCEPTS



Drill Hole	From (Meters)	To (Meters)	Width Meters	Au g/t	Ag g/t	Ag Eq g/t	Pb	Zn	Cu
SM20-13	67.00	71.20	4.20	0.029	16.00	17.49	229 ppm	243 ppm	-
Including	210.80	220.70	9.90	0.031	11.00	12.59	194 ppm	563 ppm	-
Including	267.00	272.80	5.80	0.054	30.00	32.78	1,565 ppm	1,625 ppm	-
Including	432.00	435.35	3.35	0.026	10.00	11.34	1,879 ppm	1,001 ppm	1,992 ppm
SM20-14	172.50	185.15	12.65	0.23	35.09	46.92	0.15%	0.45%	-
Including	180.35	184.05	3.70	0.32	67.19	83.65	0.43%	1.23%	-
Including	182.80	184.05	1.25	0.56	120.00	148.81	1.15%	3.37%	-
Including	182.80	183.20	0.40	0.646	268.00	301.44	2.09%	5.51%	-
SM20-15	209.20	212.60	3.40	1.24	223.82	287.36	0.82%	2.82%	0.09%

2020-2021 DRILL PROGRAM - SURFACE DRILL HOLE INTERCEPTS



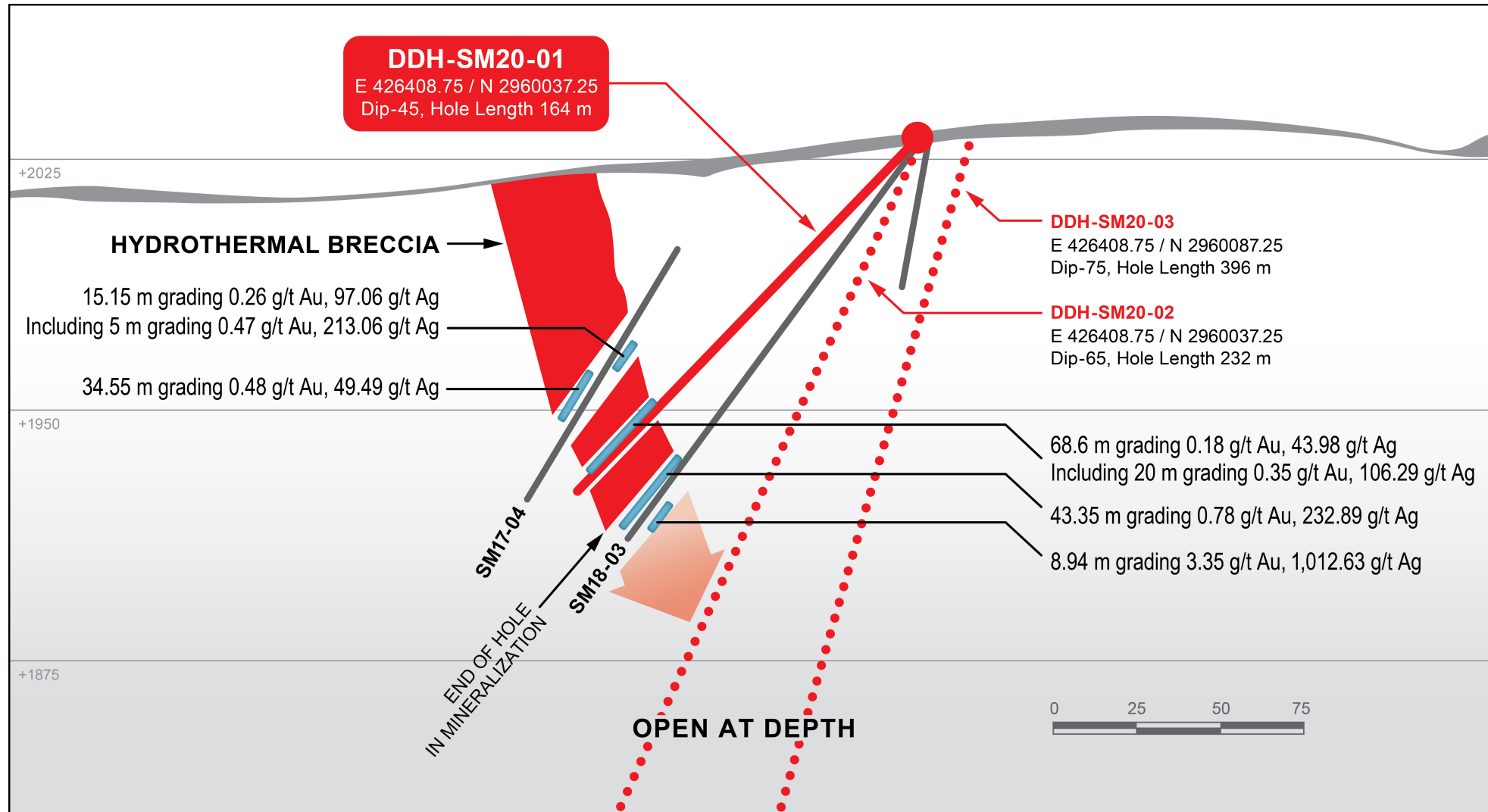
Drill Hole	From (Meters)	To (Meters)	Width Meters	Au g/t	Ag g/t	Ag Eq g/t	Pb	Zn	Cu
Including	209.20	209.40	0.20	0.52	141.00	167.75	0.84%	1.33%	0.02%
Including	209.40	210.80	1.40	0.87	71.70	116.61	0.52%	0.78%	0.05%
Including	210.80	211.20	0.40	2.05	148.00	253.45	1.43%	5.48%	0.14%
Including	211.20	212.40	1.20	1.39	116.00	187.50	0.90%	4.57%	0.08%
Including	212.40	212.60	0.20	1.93	2,170.00	2,269.28	1.21%	2.80%	0.36%
Including	212.60	216.00	3.40	0.58	35.47	65.24	0.17%	0.56%	0.03%
SM20-16	204.10	214.60	10.50	0.38	31.52	51.07	0.18%	0.95%	0.02%
Including	209.90	210.30	0.40	0.39	122.00	142.06	0.71%	2.79%	0.12%
Including	212.00	213.20	1.20	1.37	51.50	121.97	0.58%	4.25%	0.03%

2020-2021 DRILL PROGRAM - SURFACE DRILL HOLE INTERCEPTS

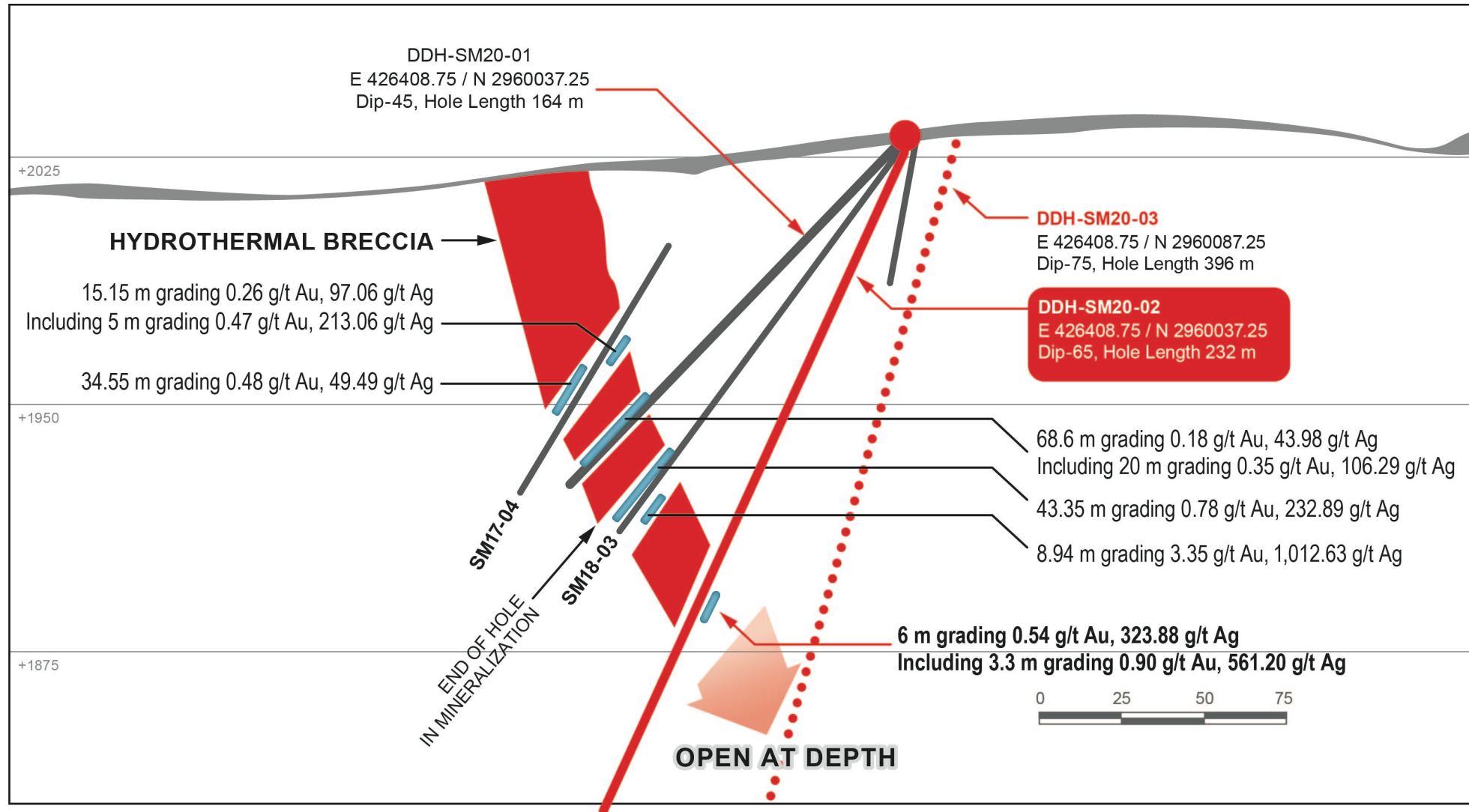


Drill Hole	From (Meters)	To (Meters)	Width Meters	Au g/t	Ag g/t	Ag Eq g/t	Pb	Zn	Cu
SM20-17	230.50	258.00	27.50	0.19	20.37	30.14	0.03%	0.08%	0.01%
Including	230.50	238.20	7.70	0.17	45.28	54.02	0.07%	0.22%	0.01%
Including	230.50	231.70	1.20	0.52	163.00	189.75	0.31%	1.02%	0.02%
SM20-18	150.30	169.95	19.65	0.44	52.04	76.67	0.29%	0.63%	0.02%
Including	157.10	169.95	12.85	0.51	74.13	100.36	0.39%	0.80%	0.03%
Including	157.10	165.00	7.90	0.74	104.41	142.48	0.55%	1.20%	0.04%
Including	157.10	162.00	5.00	1.01	83.95	135.90	0.79%	1.79%	0.05%
Including	164.00	165.00	1.00	0.33	322.00	338.98	0.26%	0.41%	0.04%

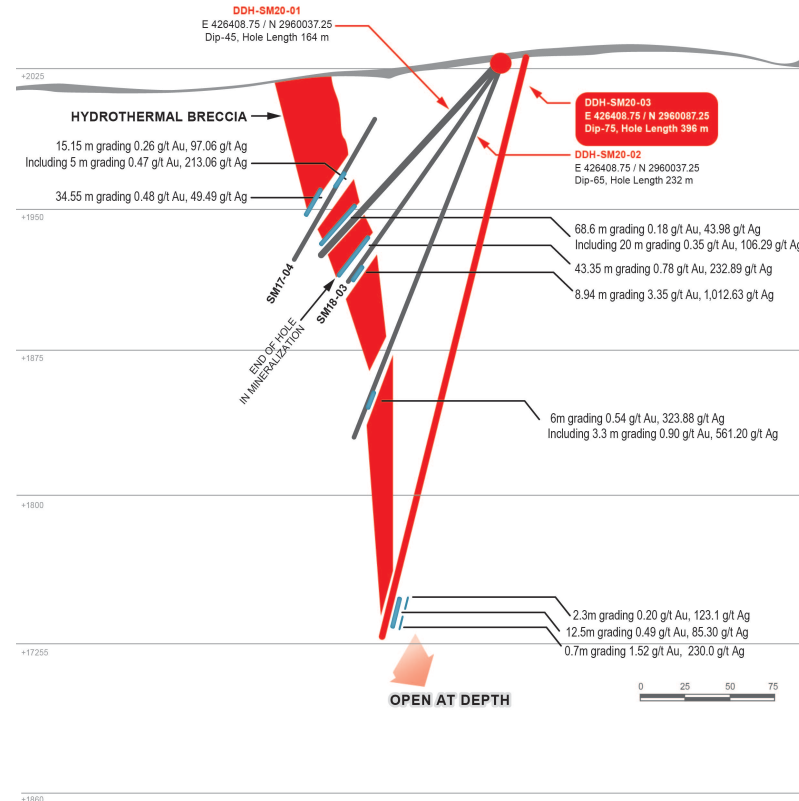
CROSS VIEW OF DRILL HOLE INTERCEPTS



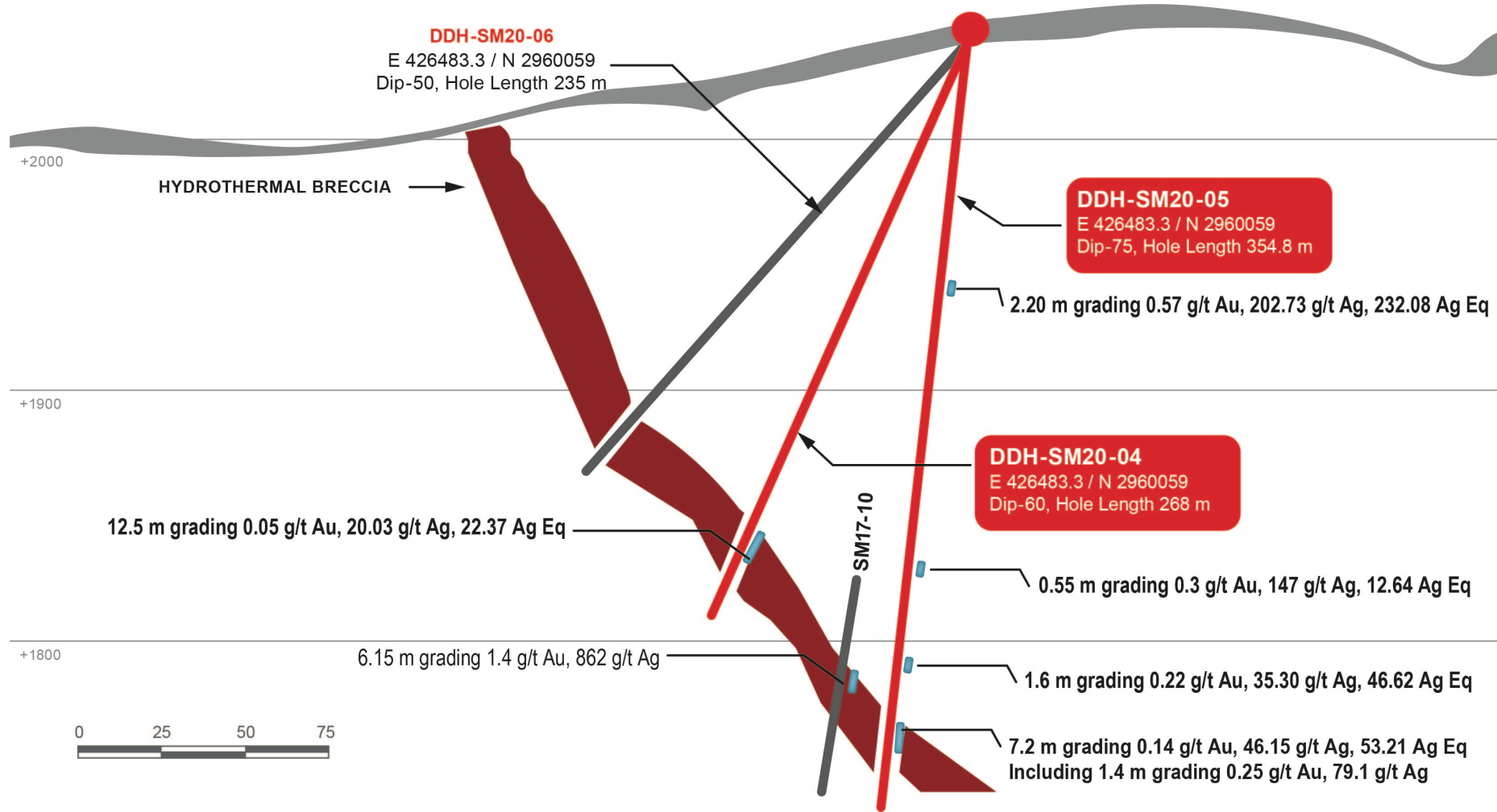
CROSS VIEW OF DRILL HOLE INTERCEPTS



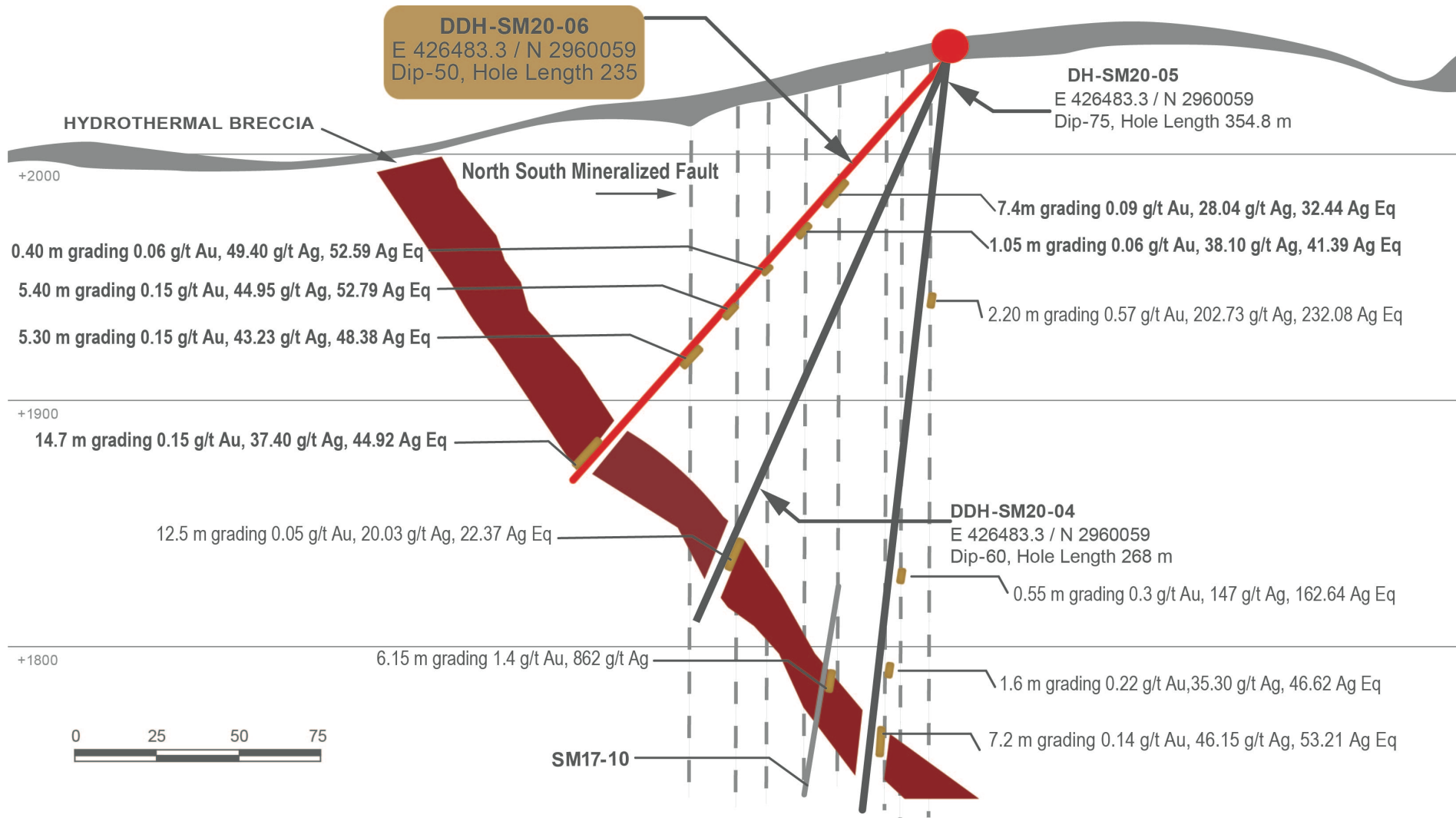
CROSS VIEW OF DRILL HOLE INTERCEPTS



CROSS VIEW OF DRILL HOLE INTERCEPTS



SECTION VIEW OF SELECTED DRILL HOLE INTERCEPTS

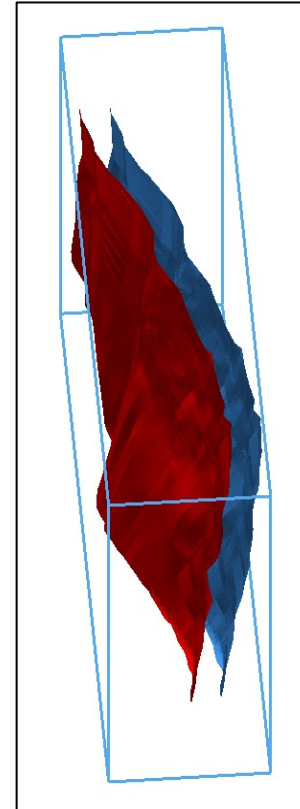


SANTA MARIA STRUCTURE

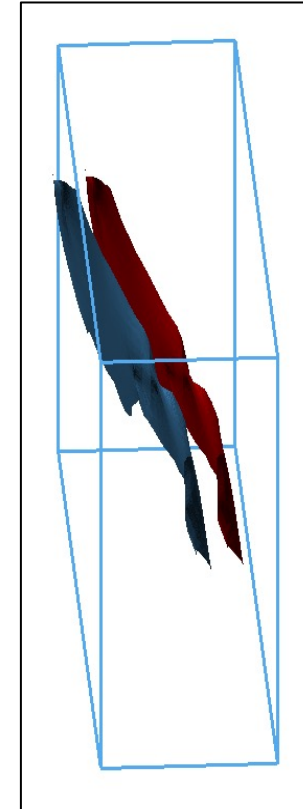
TOPOGRAPHY SURFACE (SHADOWED) AND PERSPECTIVE VIEW LOOKING EAST – SANTA MARIA DEPOSIT



Appendix



Main Vein
Santa Maria Vein



Dos Vein
Santa Maria Dos Vein

Hanging Wall (red)
and Footwall (blue)
for the Santa Maria
Structure

PAST SELECT SURFACE DRILL HOLE INTERCEPTS (CONTINUED)

Drill Hole	Width Meters	Au g/t	Ag g/t	Pb %	Zn %	Cu %
SM16-18	1.44	1.44	1,198.31	-	-	-
SM16-19	1.75	1.30	542.41	-	-	-
SM16-23	2.13	0.42	544.48	-	-	-
SM17-01	2.51	0.79	593.30	-	-	-
SM17-03	0.85	0.64	1,675.00	1.26	2.75	-
	2.40	0.31	252.5	-	-	-
SM17-08	9.95	0.80	239.29	-	-	-
SM17-10	9.15	0.96	632.62	-	-	-
SM18-03	8.94	3.35	1,012.63	-	-	-

PAST SIGNIFICANT HIGH-GRADE SANTA MARIA DEPOSIT UG CHANNEL SAMPLE INTERVALS



Channel ID	From	To	Width Meters	AG >500 g/t	Au g/t
SM-100	0	2.0	2.0	2,500	1.0
SM-101	0	2.0	2.0	899	1.3
SM-107	0	2.15	2.2	1,115	1.3
SM-113	0.35	1.7	1.4	579	2.2
SM-182	0	1.7	1.7	1,353	4.0
SM-186	0	2.0	2.0	658	0.9
SM-208	0	1.8	1.8	504	1.1
SM-230	1.1	2.5	1.4	525	0.6
SM-241	0	2.4	2.4	594	1.4
SM-249	0	2.35	2.4	1,284	1.5
SM-250	0	2.65	2.7	992	1.5

PAST SIGNIFICANT HIGH-GRADE SANTA MARIA UG CHANNEL SAMPLE INTERVALS



Channel ID	From	To	Width Meters	AG >500 g/t	Au g/t
SM-253	0	1.63	1.63	561	1.5
SM-262	0.8	2.75	2.0	621	0.8
SM-269	0	1.5	1.5	520	0.5
SM-287	0	2.9	2.0	523	0.7
SM-288	0	2.9	2.9	559	1.3
SM-290	0	2.5	2.5	509	0.9
SM-292	0	1.45	1.45	1,744	2.4
SM-295	0	2.2	2.2	1,029	1.9
SM-296	0	3.03	3.03	535	1.4
SM-298	0	2.4	2.4	903	1.5
SM-300	0	1.5	1.5	991	1.8

PAST SIGNIFICANT HIGH-GRADE SANTA MARIA UG CHANNEL SAMPLE INTERVALS



Channel ID	From	To	Width Meters	AG >500 g/t	Au g/t
SM-301	0	0.95	0.95	2,094	2.3
SM-307	0	1.75	1.75	681	0.6
SM-311	0	0.95	0.95	2,500	3.6
SM-312	0	1.2	1.2	955	3.6
SM-318	0	1.25	1.25	754	0.9
SM-321	0	1.65	1.65	533	0.4
SM-323	0	2.4	2.4	559	2.6
SM-340	5	7.2	2.2	1,094	0.6
SM-346	1.3	3.9	2.6	790	0.8
SM-359	0.2	2.6	2.4	526	0.8
SM-360	0.8	3.3	2.5	591	0.91.1

PAST SIGNIFICANT HIGH-GRADE SANTA MARIA UG CHANNEL SAMPLE INTERVALS



Channel ID	From	To	Width Meters	AG >500 g/t	Au g/t
SM-367	0.5	3.8	3.3	635	1.0
SM-392	1.0	2.2	1.2	1,175	1.8
SM-398	1.7	2.4	0.7	1,184	2.4
SM-400	0.8	1.8	1.0	1,653	2.6
SM-418	0.8	2.7	1.9	569	2.2
SM-434	1.2	2.3	1.1	597	2.4
SM-435	0.9	1.9	1.0	1,005	2.8
SM-438	0	2.8	2.8	614	3.7
SM-439	0	1.6	1.6	530	1.1
SM-452	0	1.75	1.75	519	0.5
SM-470	0.4	1.5	1.1	618	1.1

PAST SIGNIFICANT HIGH-GRADE SANTA MARIA UG CHANNEL SAMPLE INTERVALS



Channel ID	From	To	Width Meters	AG >500 g/t	Au g/t
SM-480	0.5	2.4	1.9	762	0.9
SM-486	0.8	2.6	1.8	762	0.9
SM-487	1.1	2.93	1.8	823	0.9
SM-488	0.85	2.7	1.9	759	0.8
SM-489	0.8	2.4	1.6	752	1.1
SM-493	0.15	3.0	2.9	584	1.2
SM-494	1.06	2.46	1.4	1,261	3.5
SM-496	0	2.18	2.2	694	1.9
SM-497	0	1.65	1.7	607	1.1
SM-498	0.58	2.42	1.8	601	1.5
SM-499	0	1.49	1.49	1,584	2.6

PAST SIGNIFICANT HIGH-GRADE SANTA MARIA UG CHANNEL SAMPLE INTERVALS



Channel ID	From	To	Width Meters	AG >500 g/t	Au g/t
SM-500	0.45	1.95	1.5	845	2.4
SM-504	0	2.58	2.6	1,099	2.0
SM-507	0	1.9	1.9	1,117	2.1
SM-520	0.8	1.85	1.1	693	1.0
SM-521	0.65	2.5	1.9	774	1.4
SM-526	1.0	2.25	1.3	598	1.1
SM-527	0.9	2.5	1.6	1,022	4.0
SM-528	0.6	2.2	1.6	839	1.5
SM-534	0.5	2.41	1.9	604	1.4
SM-535	0.6	2.25	1.7	1,278	4.00
SM-536	0.7	2.5	1.8	721	0.5

PAST SIGNIFICANT HIGH-GRADE SANTA MARIA UG CHANNEL SAMPLE INTERVALS



Channel ID	From	To	Width Meters	AG >500 g/t	Au g/t
SM-537	0	2.5	2.5	1,086	1.0
SM-546	0.6	1.8	1.2	594	1.5
SM-549	0	1.75	1.75	935	1.5
SM-550	0	1.59	1.59	627	1.8
SM-553	0	1.7	1.7	773	1.0
SM-554	0	1.55	1.55	1,149	0.9
SM-555	0	0.6	0.6	2,100	1.5
SM-556	0.15	1.1	0.95	1,256	1.2
SM-563	0	3.13	3.13	684	1.4
SM-574	0.2	2.4	2.2	796	1.6
SM-607	1.58	2.84	1.3	694	3.2



Fabled Silver Gold Corp.

Suite 480 – 1500 West Georgia St.
Vancouver, BC V6G 2Z6

Telephone: 819-316-0919

TSX-V: FCO

fabledsilvergoldcorp.com

Contact Person

Peter Hawley – CEO, President & Director
peter@fabledfco.com

Investor Relations

Mars Investor Relations
FCO@marsinvestorrelations.com

